

# ZipcatPRO

Version 2.0

Support/Updates  
[www3.blackboard.com/m2s](http://www3.blackboard.com/m2s)  
[m2s@blackboard.com](mailto:m2s@blackboard.com)  
[m2@ddii.com](mailto:m2@ddii.com)

Zipcat Pro is a 32-bit application for cataloging ALL of your offline media, so that you can recall and search through them without having to insert each disk to find what you're looking for. With Zipcat Pro, you'll eliminate those paper printouts and cumbersome spreadsheets that you may use to keep track of what you have on your disks. We think that you'll find that our program is easier and faster than any other today.

Zipcat Pro is compatible with all fixed and removable media formats supported by Windows 95 and Windows NT 4.0, including: FAT, FAT-2, FAT-32, NTFS, ISO9660, and Microsoft Romeo and Joliet CD-ROM formats.

#### **UNREGISTERED VERSION LIMITATIONS**

The unregistered version of Zipcat Pro is limited to viewing, exporting and searching the first 3 cataloged volumes only. Although, you can continue to catalog disks during the evaluation period of 30 days, you will only see the first three. In addition, the registration reminder "nag" screen will appear initially each time you start the program. Lastly, unregistered versions cannot create new databases or open other existing ones.

The application will not "time out" and is fully functional in every other way. I firmly believe in charging small fees for software registration, and even smaller ones for upgrades. Please respect the work I put into this application by registering, and supporting future ventures and enhancements!

Thanks for supporting SHAREWARE!

You can use ZipCat Pro for 30 days. If you decide to use it after that period, please register online using your credit card (<http://www3.blackboard.com/m2s>) or mail a \$25(U.S.) registration fee to the address below. You will then receive, by mail or E-mail, a registration Name and Number, which will unlock all features of the program, and remove the "nag" screen at startup.

*Keep in mind that although unregistered ZipCat will only display 3 volumes, you can continue to catalog additional volumes. They won't show in the volume window initially, but will after you register the program.*

---

## How to Register...

**CREDIT CARD/ONLINE ORDERS:** Please visit our web site at <http://www3.blackboard.com/m2s> to use your credit card to register Zipcat Pro online, using a secure server transaction.

**MAIL ORDERS:** The version you have is the real thing - there are no manuals or retail versions! To receive your registration code to unlock ZipCat, please send a **check** or **money order (\$25 U.S.)** made payable to **Michael Mullin**, to:

ZipCat Pro Registration  
133 Lexington Drive  
Phoenixville, PA 19460

---

## How would you like to receive your registration?

**First Method:** Your Internet mail address: \_\_\_\_\_

**Example:** America Online - Use your screen name at aol.com to receive internet mail. For example, if your screen name on AOL is JoeBlow, your internet mail address would be JoeBlow@aol.com.

**CompuServe:** Use your user id with a period instead of a comma, at compuserve.com to receive internet mail. For example, if your user id on CompuServe is 00000,0000. Your internet mail address is 00000.0000@compuserve.com.

**Second Method:** Your mailing address:

\_\_\_\_\_  
\_\_\_\_\_  
\_\_\_\_\_

Telephone # (                    ) \_\_\_\_\_

## **Contacting M<sup>2</sup> Software...**

Feel free to send questions and comments to me at the internet Email addresses listed below. If you don't receive a response within one week from the first Email address, try the second one.

**Main Email address:** m2s@blackboard.com

**Secondary Email address:** m2@ddii.com

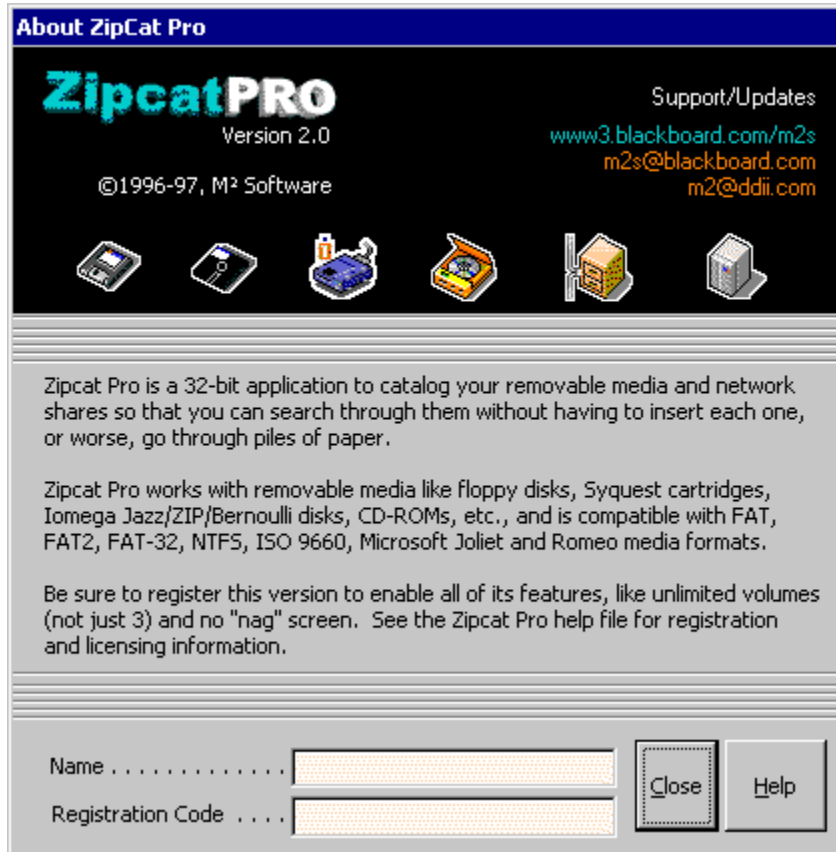
Zipcat Pro has a home on the WorldWide Web. You can always find the latest version there. The address is:

**<http://www3.blackboard.com/m2s>**

---

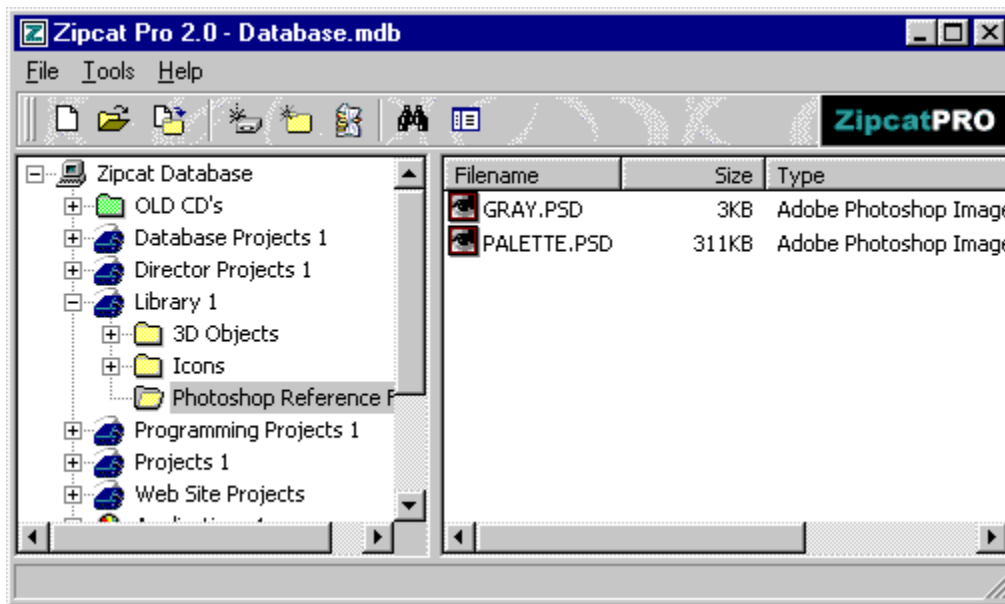
Thanks for supporting SHAREWARE!

As an unregistered user you'll be greeted with the "about" dialog, which also functions as the "nag" screen. You'll have to wait 10 seconds before you'll be able to continue using Zipcat Pro. This is also where you'll register the program.



elow is the main Zipcat Pro Dialog. From here, you can access ALL of the functions of the program. The toolbar at the top is styled after the new Office 97 suite, and features "tooltips." These tips popup to explain what a specific button does, when you leave your mouse cursor over it for a few seconds. The buttons from left to right are:

NEW database, OPEN database, EXPORT data, CATALOG a new disk, create a CATEGORY, COMPACT the database, SEARCH, and OPTIONS. The logo on the far right can be cicked to bring up the "About Box." The pull-down menus give the user additional access to these same features.

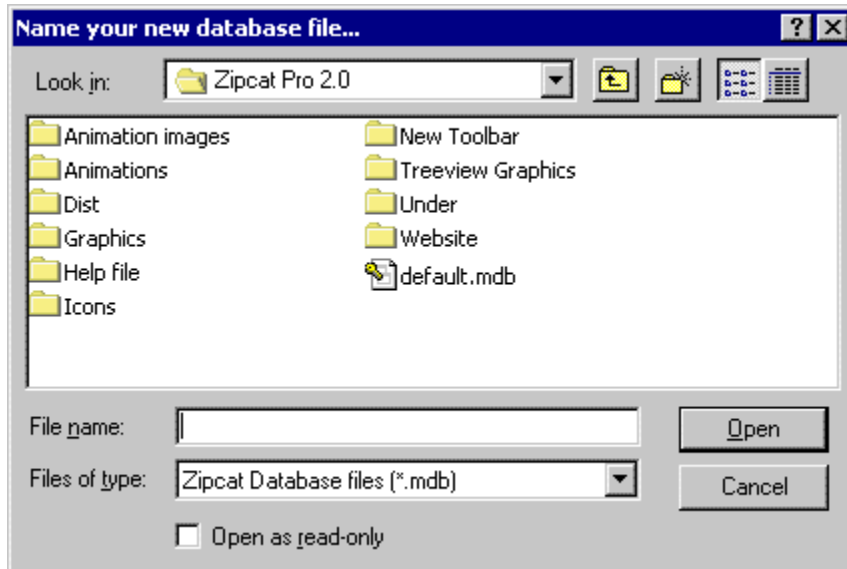


The left-most panel displays the disks, or "volumes," that you catalog, as well as their subfolders. Much like the Windows Explorer, you can move through them to view their contents, rename items, delete items, etc. Click the right mouse button on these objects to see what options are available.

The right-most panel shows the contents of the selected volume on the left. Some of the same information (volumes, categories and folders) are displayed in both panels at different times, but this panel also shows the individual files. Here, you can delete items, add descriptions, and more. You can even double-click on files and folders in this panel to load them automatically (you will be prompted to insert the proper media, and even find it if the drive is remapped.) Click the column headers to sort your volume contents for easier viewing. As with the left-most panel, click your right mouse button on objects in this panel to see what other options are available. Select multiple objects in the right pane, and you can add descriptions, or delete them all at one time! If you're adding descriptions in this way, you'll be prompted for a description for each valid object, one at a time.

Finally, the status bar at the bottom of the screen displays information about any selected volume in the left panel.

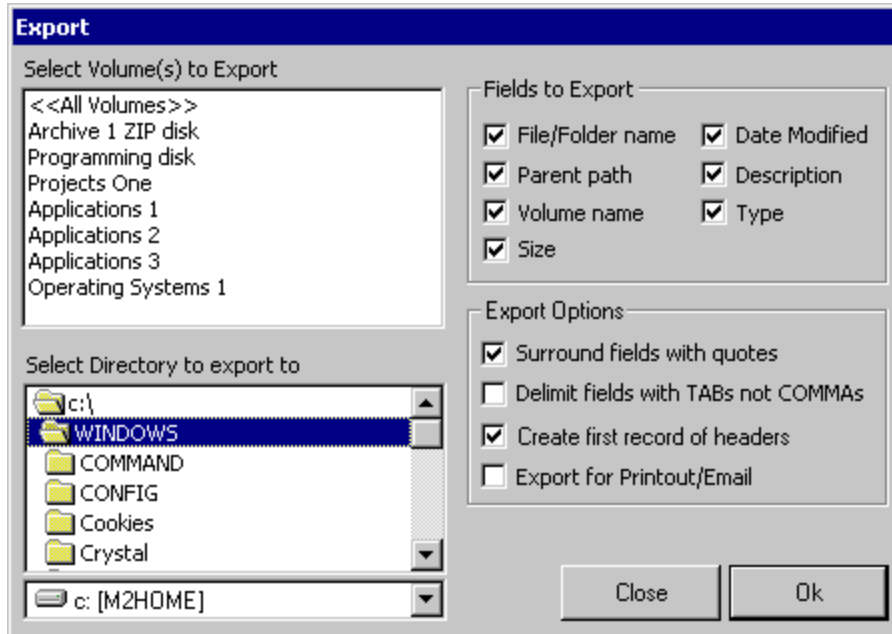
Zipcat Pro starts up with a default database, with the name default.mdb (on disk.) When you register the program, you can optionally create new database files, and open them at any time. This provides a way of cataloging unlimited amounts of data with little overhead.



Both the NEW and OPEN dialogs look the same. When creating a NEW database, you simply type in a name for it (with or without the .mdb extension) and click open. It will be created and opened automatically.

When opening a file, you simply select the file you wish to open and click the OPEN button.

You may want to export data for several reasons. One reason is to send someone Email with an attachment listing files/folders. You may also want to create a spreadsheet or alternate database of your files for printing, etc. Zipcat Pro allows you to export data as comma or tab delimited database formats, as well as a more Email-friendly format.



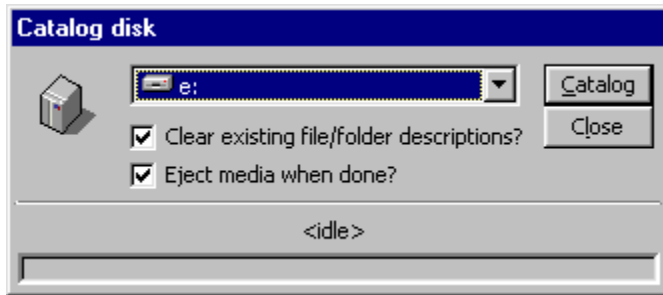
To export data, simply select volumes in the upper left panel. To select multiple volumes, hold your control or shift keys while clicking for different selection modes, or click <<All Volumes>> for an easy global export of all of them. Next (below,) select a destination for your exported files. You can then select which fields you'd like to export (in the pane to the top right.) Finally, select from four output options:

1. Surround fields with quotes -- Some databases need quotation marks around fields to import them.
2. Delimit with tabs not commas -- If checked, output is TAB-delimited; otherwise, it's comma delimited.
3. Create first record of headers -- First record in the file will contain the names of the columns, depending on which fields you've selected to output.
4. Export for printout/Email -- Generates field headers and fields separated by commas

#### **EXPORT SEARCH RESULTS ONLY**

You can export search results by performing a search, and clicking the EXPORT button. The above screen will appear with the appropriate fields disabled.

The catalog function represents the meat and potatoes of the application, and is FAST and easy to use.



Simply select a drive to catalog via the drop-down list. If you've previously cataloged the disk, and it has descriptions on files/folders, you will want to make sure that the "Clear existing file/folder descriptions" checkbox is empty, so that it will keep them. In addition, select whether you'd like to eject the disk when finished. Lastly, click the catalog button. Note that you can set the default values for the options on this dialog in the options window (available from the main screen.)

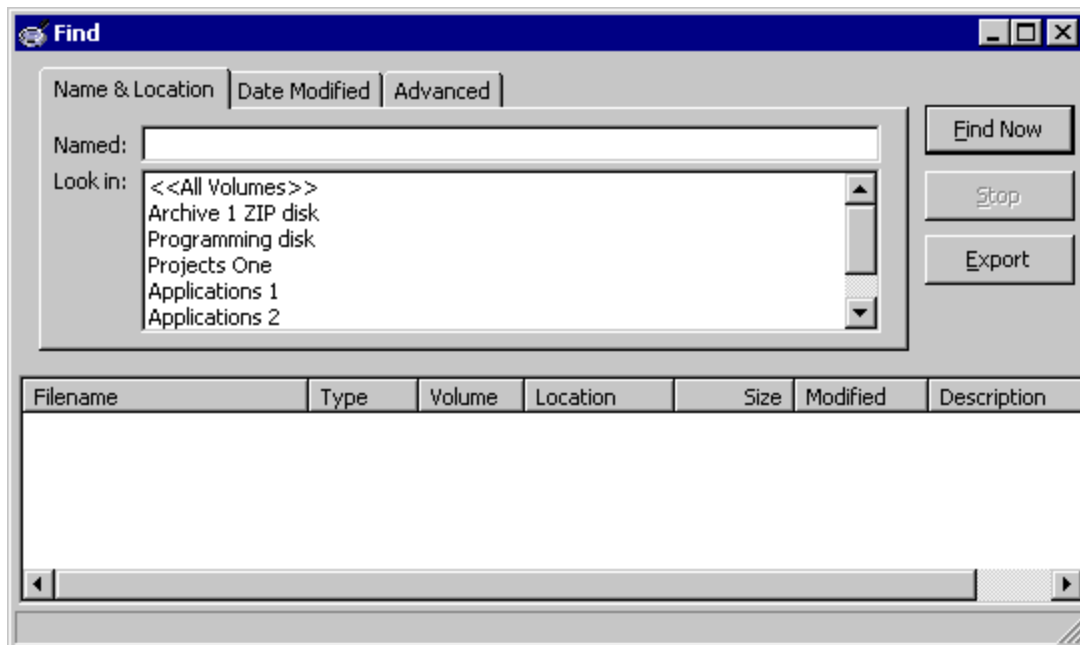


You can create folders called "categories" to group your volumes with. They appear as green folders and can only be created in the root directory (you cannot nest them.) To create one, simply click the "Create New Category" button in the toolbar, and type in a name.

To move a volume into a category, right click on the volume, and select "Categorize." From the dialog that appears, click the appropriate green category folder to put it in, or the root directory icon, and click "choose."

For speed purposes, the Jet 3.5 engine doesn't actually remove data that's been deleted or recataloged. This causes the database file to "bloat" when you frequently delete or recatalog volumes. To keep the file size down, open the database you wish to compact and click the "Compact database" button. You will be asked if you are sure. Answer yes. It may take a minute or two with large database files.

One of the most powerful features of Zipcat Pro is its search, or "query" feature. There are three tabs in the dialog that allow you to select many different options, from which volumes to search, to descriptions, file, folders or both, dates, sizes, and more. Search results are displayed in the bottom-most panel. Click the column headers to sort your results for easier viewing.



After you perform a search, you can click the "export" button to optionally export the results. You can also double-click on any file or folder in the results panel to load it automatically. You will be prompted to insert the appropriate media, and even find it if the source drive has been remapped since it was cataloged.

The Options dialog allows you to customize how Zipcat Pro behaves and starts-up.

---

### **Behaviors**

1. Startup with Search Dialog --When you start Zipcat Pro, the Search dialog is the first thing you see. This makes it easier to access your data more than you catalog it.
2. SmartCaps -- Will force "initial-caps" on each word, making the first letter of each word a capital, and the rest of its' letters lower-case. Some people think it's easier to read this way. This does not effect your data on-disk.
3. Always Clear Descriptions -- This will automatically "check" the checkbox of the same name in the Catalog Volume window.
4. Eject Media After Cataloging -- Self explanatory. Will eject ANY removable media that can be ejected, including CD-ROMs. This feature works in Windows 95 as well as NT.
5. Network Shared Mode -- Generally, leave this checked. If unchecked, all database operations are read-only - which means that you can't add to, delete, or modify the database. This feature is present for people who wish to burn Zipcat Pro onto a CD, and run it from there.
6. Default Catalog Drive -- Self-explanatory. Note that if disk media is not in the drive when you try to catalog a disk, the default drive will default to C: until you insert media into the drive.
7. Default to Search Files and Folders -- Should the search engine search for files, folders or both by default?

**Keyboard commands available in the main window:**

F1	Help
F2	Rename selected Volume, Root, or Category
Ctrl+N	New database
Ctrl+O	Open Database
Ctrl+E	Export Data
Ctrl+W	New Category
Ctrl+X	Exit
Ctrl+C	Catalog Disk/Volume
Ctrl+F	Find/Search
Ctrl+M	Compact database
Ctrl+T	Options
Ctrl+A	About Dialog
Delete	Delete selected Volume or category (and all it's child volumes!)

**For those teckies out there, here are some tech specs that may or may not matter:**

Executable: 32-bit, optimized native intel code

DLLs: under32.dll disk recurse w/quick-sort written by  
Ron Michael Zettlemoyer using Microsoft C++ 4.2

Video: 16 through 24-bit preferable, but looks good in 8-bit.  
Small-fonts; no "wacky" Windows 95 themes recommended.

---

File size limits: 2 gigabytes

Volume size limits: 2 terabytes

Number of volumes/db: <limited by disk space only>

Database format: Microsoft Access 97/Jet 3.5/DAO

Filename limits: Filename with Path maximum of 255 characters

Memory requirements: Windows 95: 8mb RAM (minimum), Windows NT: 16mb RAM (minimum)

Recommended RAM: Windows 95: 16mb, Windows NT: 32mb

Hard disk Needed: Installation plus average database require +/- 12mb



